

## Dimetis BOSS Netview<sup>®</sup>

### Broadcast Network and Studio Monitoring System

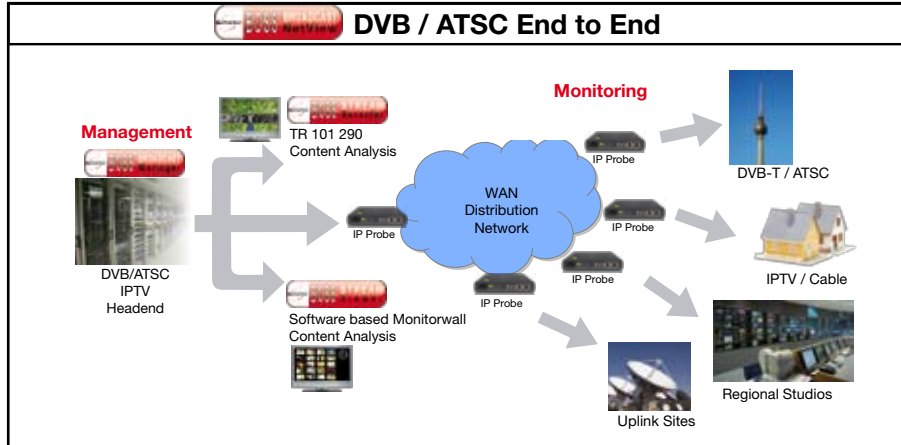
Dimetis BOSS Netview<sup>®</sup> is a powerful Monitoring Software System designed to monitor DVB and IPTV services in broadcast networks and studios. It can display several levels of hierarchy-from network overview over regional sites to detailed equipment views. It collects and receives alarms from the whole network. Alarms can be filtered and new alarms can be generated using a sophisticated Expression Builder.

#### Dimetis BOSS Netview<sup>®</sup> 2000

Dimetis BOSS Netview<sup>®</sup> 2000 provides monitoring of an entire DVB/ATSC IPTV distribution network, from the head-end to the DSLAMs. It collects and analyzes data from IPTV probes located throughout the whole network. It processes all alarms, performs fault correlation and displays all information on a GUI (Grafical User Interface). The IPTV probes monitor all SPTS (Single Program Transport Stream) at their specific location in the IPTV Network. Dimetis BOSS Netview<sup>®</sup> supports all major vendors' IPTV probes.

#### Dimetis BOSS Netview<sup>®</sup> 500

Dimetis BOSS Netview<sup>®</sup> 500 is a small footprint monitoring probe. It extends the reach of Dimetis BOSS Netview<sup>®</sup> 2000 to all devices which are installed at remote locations. It includes service-free hardware and its aggregation capabilities make it especially useful in locations where is limited network connectivity.



### Features

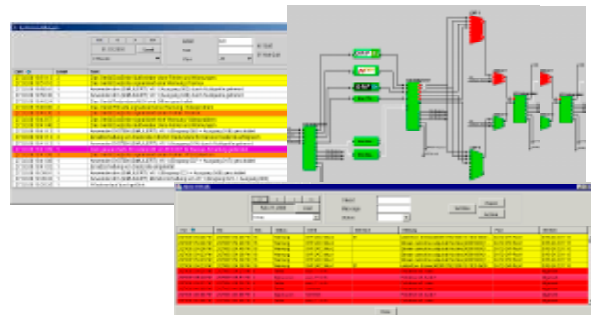
- Central, automated QoS alarm system
- Alarm correlation engine
- Centrally controlled and automated backup switching
- Vendor independent monitoring system
- One intuitive GUI for the entire broadcast network

### Benefits

- Single alarm system lowers CAPEX
- Fewer false alarms, lowers OPEX (up to 80%)
- Increases customer satisfaction and revenues
- Easy integration of new devices via SNMP
- Reduces OPEX

## General Features

- Central management, monitoring and control of network elements
  - Extensive and multi-screens views of all alarms and system messages
  - Web-based GUI
  - Integrated Universal Element Management with pre-loaded device MIBs
  - MIB import tool
  - Protection switching: Pre-assigned back-up switching
  - Distributed monitoring of larger networks
- Universal alarm management: collation, prioritization, correlation and display
  - Collates all alarms and messages from all classes of devices
  - Supports all types of broadcast devices
  - Assigns priorities to all alarms
  - Correlation engine dynamically correlates all SNMP alarms before display to the GUI (using operator-defined rules)
- Fault location, archiving and integration in OSS
  - Faster fault location by using the correlation engine
  - Archiving of all alarms and messages for rollback analysis
  - Possible integration in a tier -2 monitoring system with local/regional BOSS Netview<sup>®</sup> 500
- User authorization/authentication



## Monitoring Features

- **BOSS Netview<sup>®</sup> 2000**
  - Recording of alarms from all local and remote SNMP devices
  - Visualization of transmission network status
  - Logging of all alarms
  - Alarm correlation based on faults at locations and DVB SPTS streams (SPTS-specific QoS)
  - Remote control of equipment (e.g. transmitter) via BOSS Netview<sup>®</sup> 500
  - System messages to the users (e.g. report via SMS or e-mail)
  - Visualization of transmission network status per link and per SPTS
  - Collection performance counters
  - Correlation of Alarms
  - SLA reporting
- **BOSS Netview<sup>®</sup> 500**
  - Monitoring of incoming signal, transport stream and transmission equipment
  - Redundancy switching after error detection
  - Forwarding of alarms to BOSS Netview<sup>®</sup> 2000
  - Parameter setting for local equipment (default values given by BOSS Netview<sup>®</sup> 2000)
- **Monitoring of a ATSC/DVB-T SFN (Single Frequency Networks)**
  - Continuous analysis of the transmitted MIP (Megaframe Initialisation Packet) information
  - Disconnection of transmission sites in case of endangered SFN operation

## Contact

Dimetis GmbH  
Justus-von-Liebig-Straße 9  
63128 Dietzenbach  
Germany

phone: +49 6074 30100  
fax: +49 6074 3010 301  
mail: info@dimetis.de  
web: www.dimetis.de